

Wisborough Green Parish Council

Parish Council News

Issue: 33

July 2019

Chairman's Message

Hmm, think back to this time last year, we were all basking in the best summer since 1976; it was wonderfully hot and what a contrast to this year. Here's hoping things will pick up.

Since the last newsletter, an uncontested election was held on 2 May and I'm pleased to say that the Parish Council has a full complement of councillors, who have all served previously and are now ready to start another 4 year term of office.

Village life progresses; it is (genuinely) interesting being on a Parish Council with a mix of what I would call Groundhog Day tasks, the ones that keep coming back and never get fully resolved because it is, almost impossible to do so. Here I would cite parking, speeding, inconsiderate drivers, whether it is School Road, on the west road adjacent to the Green, Kirdford Road or during the big village events; these are problems that just won't go away and many of the proposed or possible solutions would only exacerbate or move the problem. Litter ebbs and flows but I would encourage every WG resident to, at least once, join the wonderful core team in the bi-annual litter picks (however not if you suffer from high blood pressure) when you would be inchoate with anger at quite how selfish litter spreaders are.

Then there are the new things, the new developments of housing, the Community Infrastructure Levy money that will be available for the village to spend on the various improvement projects like the Pavilion and the Village Hall that will help to secure the village's future. In the centre pages of this newsletter we have included a summary chart to give you a little more idea about Parish Council responsibilities. Also included in this issue is important information about affordable rented housing and future shared ownership opportunities.

Lastly, I would like to pay a special tribute to Tim Skinner and The Three Crowns Inn that has, unfortunately, been forced to close. Despite working incredibly hard to keep the pub going and emptying his own pockets in the process, Tim has faced a near doubling of his rent, huge maintenance demands and, the killer, an increase in business rates from a manageable £24,000 *per annum* to an impossible £70,000.

In his eight years tenure at the Crowns, Tim has been a great friend to the village, his customers and me, and I hope you will all join me in thanking him for his extraordinary contribution to village life and wish Tim, Stuart and Teddy all the very best for the future, they deserve it. Wisborough Green is a diminished place with the loss of Tim.

Wishing you all a very enjoyable summer,

Peter Drummond, Chairman

Gatwick - the latest update

The first three year term of the Gatwick Noise Management was due to expire in May but it was brought to a premature close by Bo Redeborn, the Chairman, when agreement could not be reached between the aviation industry and the communities affected by aircraft noise as to how it should proceed but, specifically, that Gatwick and the aviation industry were being asked to agree noise reduction targets with agreed methods of measurement. This should not have been unnecessarily controversial as balancing an increase in air traffic and reduction in noise is government policy. However, with the DoT unwilling to enforce the policy and there being no statutory body given the task it is hard to envisage what the future holds except that Gatwick is advancing its plans to alter its 'emergency' runway so that it can be brought into simultaneous use as a second runway. The fight continues.

New Pavilion

Just a very brief mention at this stage. Plans are being positively progressed and we intend to provide all in the village with an opportunity to comment on the latest design later in the year. This consultation will potentially be combined with the Neighbourhood Plan consultation event in September but we will keep you posted. The consultation will be well publicised to give everyone an opportunity to have their say!

5

The west road; access road to the Sports Pavilion

Can we take this opportunity to remind all those who use the Pavilion, for sports as well as socially, that access and parking in the west road is not permitted. Please park in Kirdford Road.

PLANNING COMMITTEE MEETINGS

Please refer to the agendas displayed on the village notice boards and website for information - a meeting will only be called to meet CDC deadlines. Meetings are held on a Tuesday in the Committee Room at the Village Hall at 8.00 pm and are currently scheduled for:

**2 July
6 August
20 August
3 September
1 October**

PARISH COUNCIL MEETINGS In the Committee Room at the Village Hall, 7.45 pm on the following Tuesdays:

**16 July
No meeting in August
17 September
15 October
19 November
No meeting in December**

**Members of the public most
welcome to attend.**

Traffic Management Plan

Cricketer's Crossroads: WSCC has confirmed that it is progressing with plans to improve pedestrian connectivity in the centre of the village, extend the existing layby and create another layby and pavement on the edge of the Little Green. WSCC Highways Officers have been surveying the area and we understand will need to return to dig some investigatory holes in the Little Green to determine the location of services. It is progressing, albeit slowly!

Durbans Road: We have now been told by WSCC that an application to reduce the speed limit to 30 mph cannot be progressed. We have tried all avenues and the final decision has been made. This is incredibly frustrating when we know the local concerns and have witnessed the problems first hand, but there are no further options open to us.

Hughes Hill: WSCC has now advised that the resurfacing and re-shaping of the road camber, hedge cutting and additional signage will now take place later this year; May and June were originally suggested, The Parish Council will obviously keep an eye on this to ensure that the timetable does not drift again. As soon as we know dates, we will publish the details.

Development Site Update - oops, left out of the last edition !

Great Meadow, Petworth Road: Since the development started, additional vans have appeared in the village causing visibility concerns for pedestrians as well as drivers, and also inconvenience for those who have been blocked in by parked vans. The Parish Council has taken this up with both CDC and the developer, but sadly, despite our best efforts, it has had little effect. We have received assurances from Jones Homes that additional parking is now being provided on site, and as it is the intention to be finished onsite in May, contractor parking will start to tail off. The Parish Council is very mindful that development of the Winterfold site will start within the next couple of months and has requested CDC make it a condition that contractor parking is provided onsite for the duration of the build.

Winterfold Fields, Durbans Road: Runnymede Homes asked the Parish Council for name suggestions for the site. Yet again the History Society came up trumps with a historical connection. On the 1842 Tithe Map it states that the fields were known as Sexton's Meadow, First Sexton and Middle Sexton, owned by Mr Tobbitt with Mr Songhurst as tenant. The Parish Council therefore made the suggestion that the site is named Songhurst Meadow, which Runnymede has now put forward to CDC and Royal Mail.

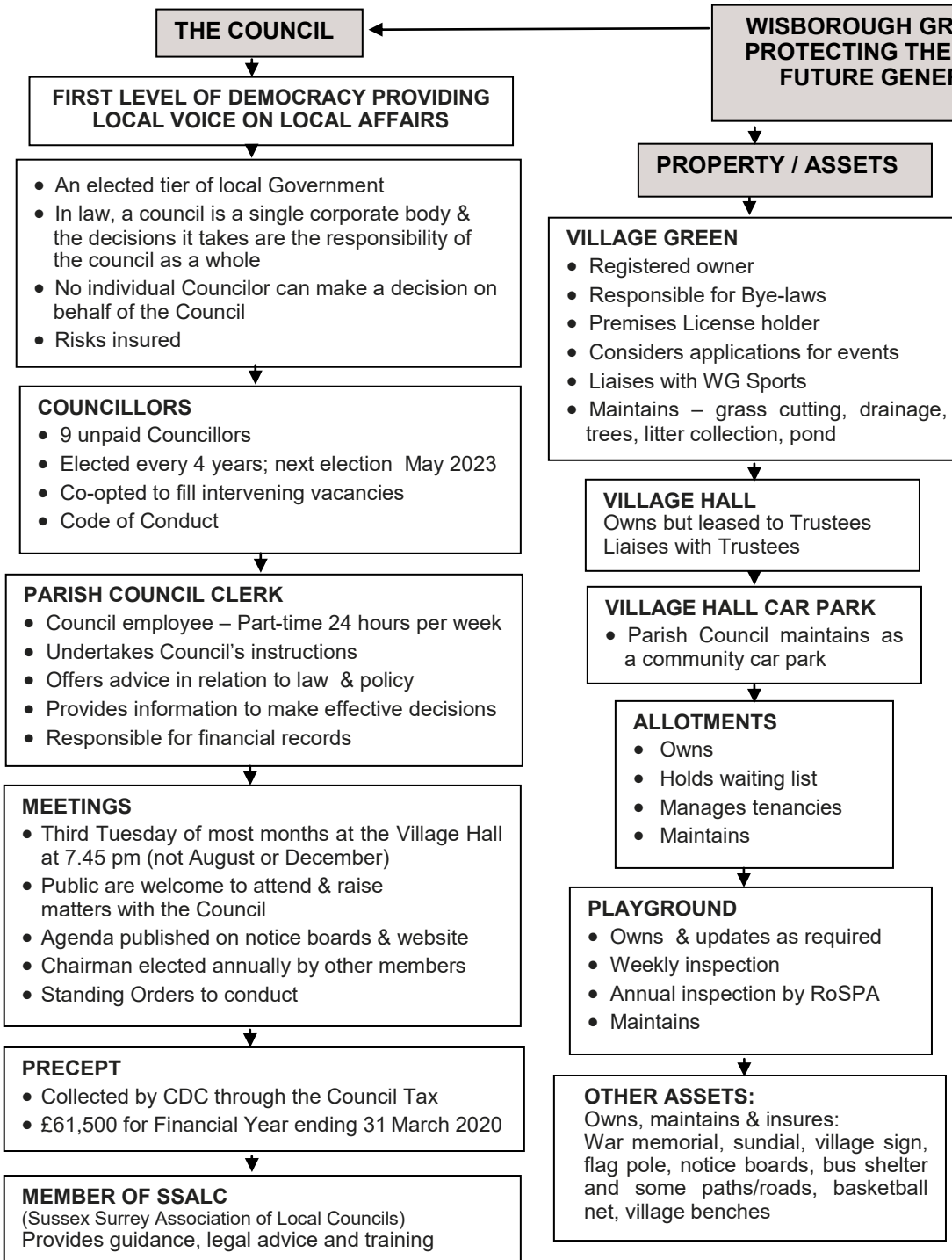
MEET YOUR DISTRICT COUNCILLOR

At the recent District Council elections, Gareth Evans and Natalie Hume were elected to represent the Loxwood Ward which includes Loxwood, Wisborough Green, Kirdford, Plaistow and Ifold, Ebernoe and Northchapel. They will be holding surgeries so if you have any issues that you would like to raise, please do use the opportunity to speak to them on the first and third Saturdays of each month, between 11 am and 1 pm at the following locations:

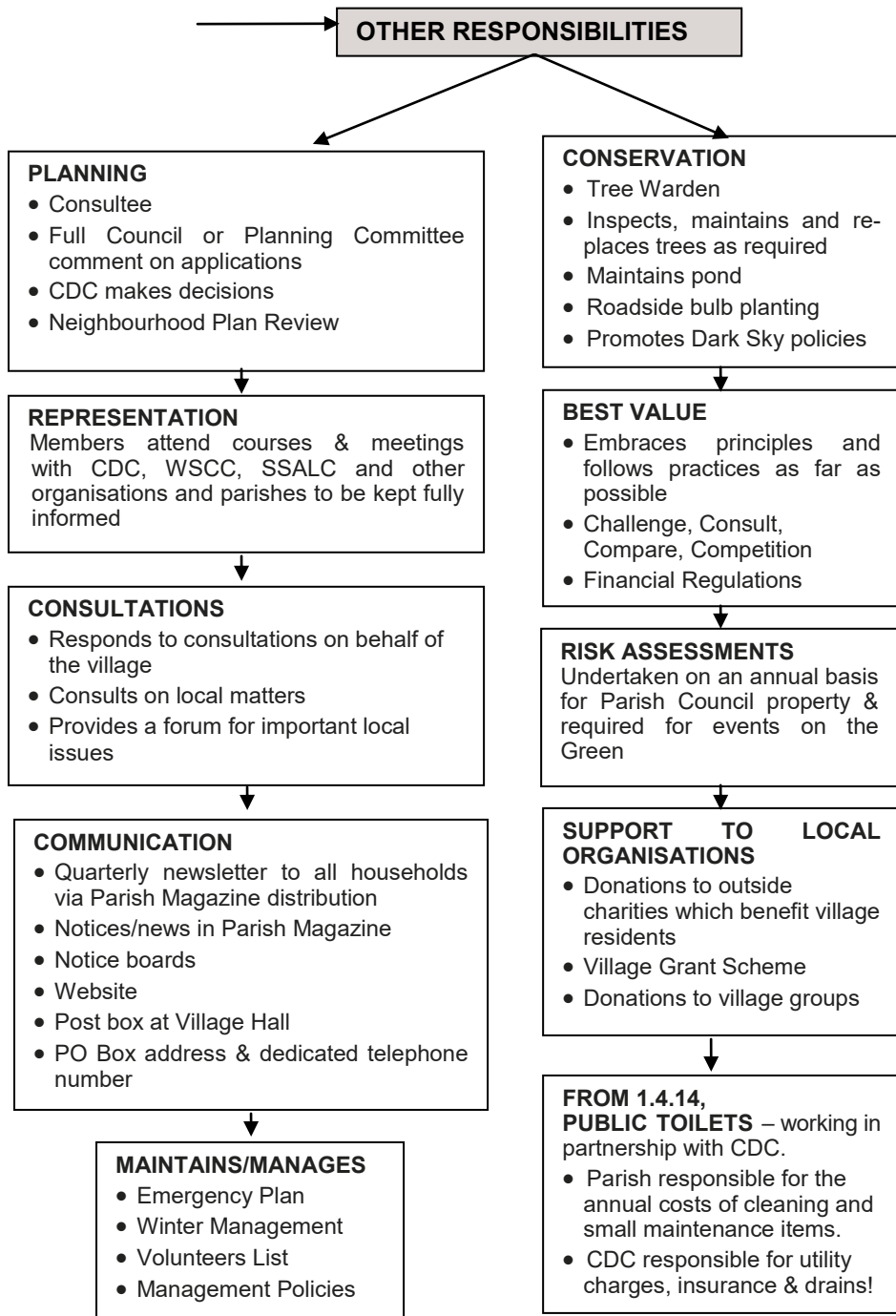
06 July - Half Moon, Northchapel
20 July - Plaistow Village Stores

03 August - Kirdford Village Stores
17 August Onslow Arms, Loxwood

Ever wondered what a Parish Council is or does ?



Your Parish Council at a glance.



New Village Affordable Housing

Affordable/Social Rented Housing

The availability of the new housing association homes at Great Meadow was advertised in the Parish Council's March newsletter, and we are delighted that some residents with a local connection to the village have now moved into their new homes. Disappointingly though, we have been told that eligible households in Wisborough Green did not bid for the properties and as such, some of the housing has now been allocated to those without a village connection.

The WG Neighbourhood Plan contains the clear desire for local people requiring affordable/social rented housing to take precedence when new accommodation becomes available. The affordable rented homes delivered through new housing developments within the parish will be allocated in accordance with Chichester District Council's Rural Allocations Policy. Households in Bands A-C will be given priority on lettings. However, this should not discourage those households in Band D from registering or placing a bid on these properties. On new schemes in rural parishes such as ours, a Local Lettings Plan is usually agreed between CDC and the Housing Association for the first let. If agreed, it allows all households (A-D) on the housing register, with a local connection to the parish, to have priority over those outside the parish, so we encourage you to register.

All the social houses in Great Meadow have now be allocated. As we are required to take more housing as part of the Local Plan Review, further affordable rented housing may become available in the future. If you have previously given up hope of getting affordable rented housing in the village, but think you would be eligible, it's worth enquiring/registering with CDC.

If you are eligible and register for social rented housing with CDC, you/your household is given a Band, the criteria being as follows:

Band A - Emergency, urgent priority to move. This could include; homeless households, households with a high medical need, under occupancy of an affordable home by 2 or more rooms.

Band B - High housing need. This could include; households over occupying a home by 2+ rooms, households whose current housing situation is having an impact on the medical condition of an applicant, households under occupying by 1 bedroom.

Band C - Identified housing need. This could include households lacking 1 bedroom, low medical priority for rehousing, households living in unsatisfactory housing conditions, applicants who are threatened with homelessness.

Band D - People with no identified prioritised housing need (as identified in bands A-C) but who still want to register are placed in this band. These are usually young people living at home with parents.

Further explanation to the allocation process and availability of properties can be found on the CDC website. For those households without a computer, smart phone or device to access the Council's website, an application form can be completed through the public access computers provided at the CDC offices. Alternatively, the Council is able to provide paper application forms on request (telephone 01243 534734).

If you are on the register, you can choose from the range of housing vacancies and bid if you are interested in being put forward for it.

Continued on page 7.

New Village Affordable Housing

You can bid on a maximum of three properties each edition. Bids can be made either through the Homemove website, by text message, post, telephone (01243 534734) or by visiting one of the three CDC offices (Midhurst, Selsey and Chichester). Once on the CDC register, the Homemove Team can provide further assistance for those requiring help with bidding.

Shared Ownership Housing

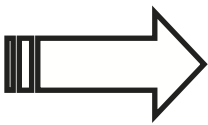
The Songhurst Meadow development (behind the Cricketers and previously known as Winterfold Fields) will now provide 6 shared equity/shared ownership units and these homes will be allocated to those with a local connection to the Chichester District. CDC does not operate the register for those interested in purchasing this type of tenure, so if this is of interest, please make further enquiries to the Help to Buy East and South East agent; helptobuyeastandsoutheast@bpha.org.uk (telephone 03333 214044) and <https://www.helptobuyese.org.uk/>

If you have any further questions, please do not hesitate to contact the Parish Council Clerk on 01403 701102.

Revised Neighbourhood Plan Review Timetable

As mentioned in the June Parish magazine, it has been necessary to postpone the Neighbourhood Plan Consultation event originally planned for the end of June. CDC is running behind with its Local Plan review, so this, combined with government funding for NP reviews not being made available until very recently, put a brief halt to progress.

The Parish Council has now received just under £7,500 funding to retain independent advisors, hold a consultation event and circulate a community questionnaire to all households after the summer. Plans are now full steam ahead and further details will be published in due course. In the meantime, please:



***** SAVE THE DATE *****

**Community Consultation in the Village Hall on
Friday 27 and Saturday 28 September 2019**

Housing Needs Survey

We have, at last, received the long awaited full report of the Housing Needs Survey from the Housing Delivery Team at CDC. It is a comprehensive report based on the 136 valid returns equivalent to a 20% response rate of total households in the parish. It represents a total of 306 people, of which respondents were 48% female, 45% male and 7% did not answer.

The response rate was considered “statistically significant and illustrative of a significant proportion of the local community.” As anticipated, it identifies a need for additional affordable housing in WG, in particular 1 and 2 bedroom units for both the social and open market. This confirms the NP policy aim of promoting delivery of smaller, mixed use housing units for a range of residential uses, where possible.

Your Parish Council

Peter Drummond (Chair) T: 01798 865546
Finance Committee, Gatwick Airport, Local Council Associations, Planning Committee, Traffic Management Plan

Andrew Jackson (Vice-Chair) T: 700574
Finance Committee, Neighbourhood Plan Review, Planning Committee (Chairman), New Pavilion Project, Pavilion Trustee Liaison

Andy Burbridge T: 701902
Green Coordination Group, Planning Committee, Youth Activities

Judith Dandy T: 701001
Green Coordination Group, Traffic Management Plan, WG School Liaison

Michael Newell T: 701171
Finance Committee (Chairman), New Pavilion Project, Pavilion Trustee Liaison, Planning Committee

Sheena Overington T: 700732
Major Emergency Plan, Neighbourhood Plan Review, Traffic Management Plan, Village Hall, Winter Management Plan

Steve Rollinson T: 700167
Major Emergency Plan, Neighbourhood Plan Review

Howard True T: 700150
Community Speed Watch, Finance Committee, Major Emergency Plan, Planning Committee, Traffic Management Plan, Winter Management Plan

Martin Watson T: 07836 700923
Finance Committee, Planning Committee, New Pavilion Project

How to contact your Parish Council

Clerk: Mrs Louise Davies
Wisborough Green Parish Council
PO Box 255, Wisborough Green
Billingshurst, West Sussex RH14 0WT
T: 01403 701102
E: clerk@wisboroughgreenpc.org

***What's on in the village ?
Check out the village website
www.wisboroughgreen.org***

Alternatively, letters can be posted in the Parish Council letterbox at the Village Hall.



AUGUST BANK HOLIDAY WEEKEND OF COMMUNITY EVENTS

FRIDAY 23 AUGUST
CHARITY MUSIC NIGHT IN THE MARQUEE (*organised by the Cricks*)

SUNDAY 25 & MONDAY 26 AUGUST 11 AM - 6 PM
ART EXHIBITION IN THE BARN ON THE GREEN

MONDAY 26 AUGUST FROM 1 PM
VILLAGE FETE, HORTICULTURAL & DOG SHOWS